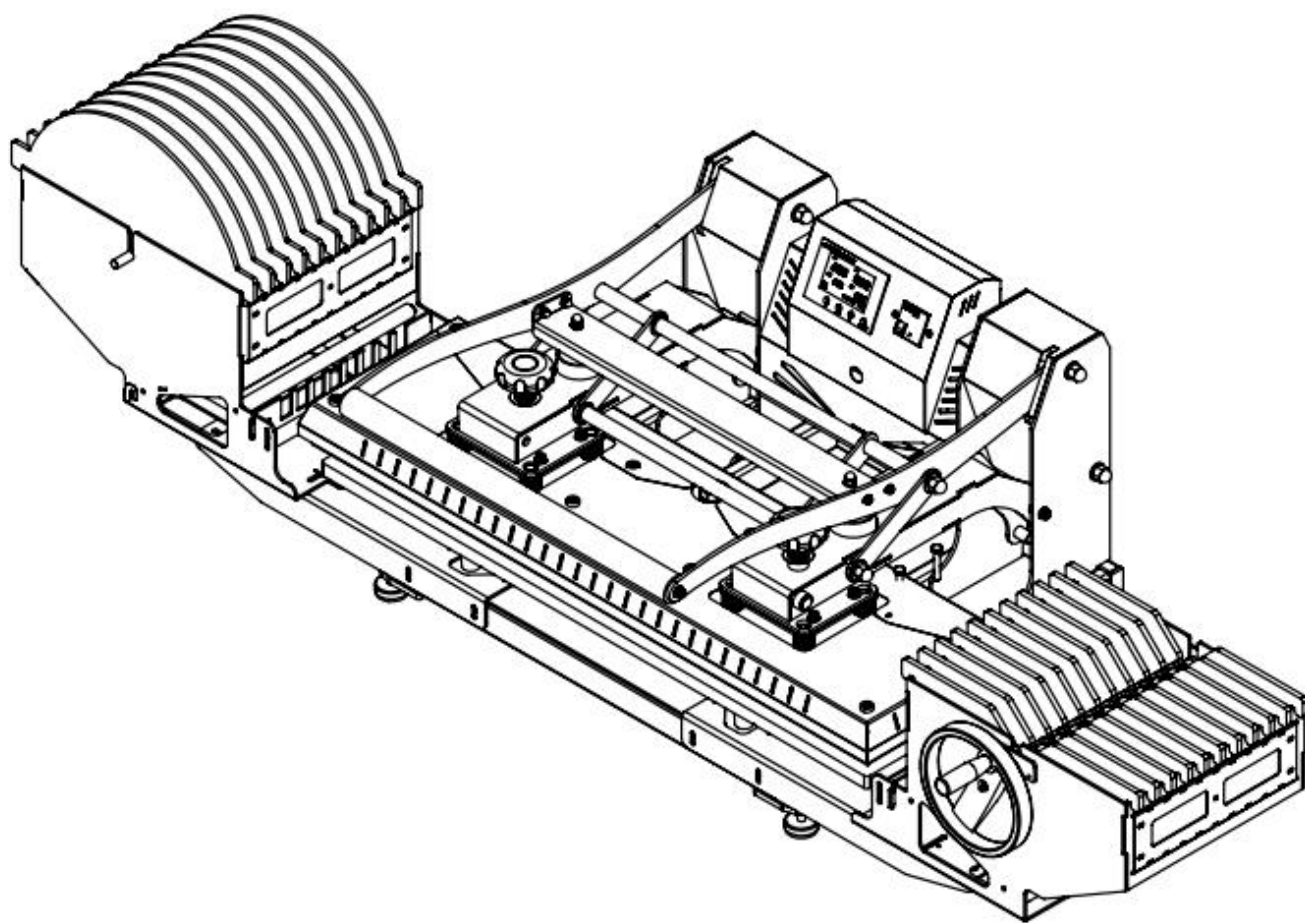


# Lanyard Heat Press With Feeding Device Manual

Model No.: LZP-40-FD

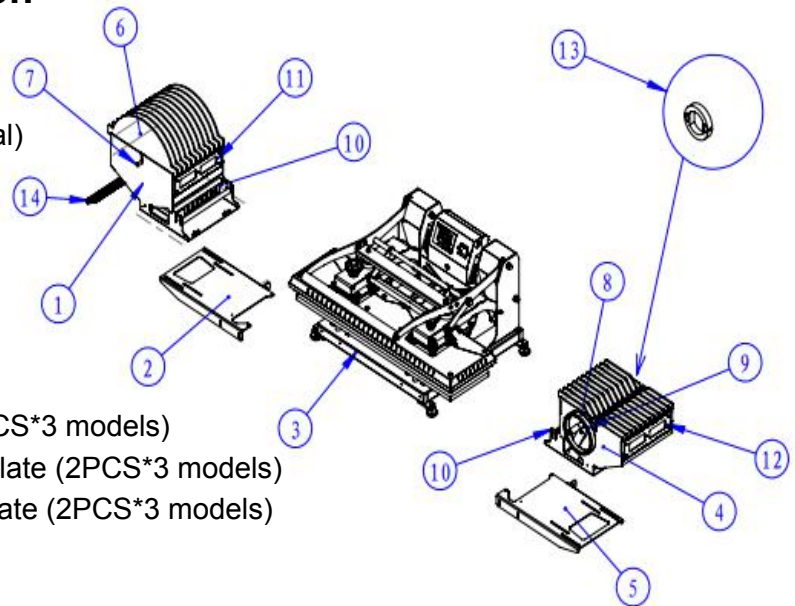


## I. Preface

The feeding device is an auxiliary device for the LZP-40 lanyard heat press machine. It solves the problem of lanyard discharging and positioning during the transfer; can make continuous processing; and highly improves the production efficiency and transfer quality, which makes it a perfect choice for the lanyard heat press industry.

## II. Structure and composition

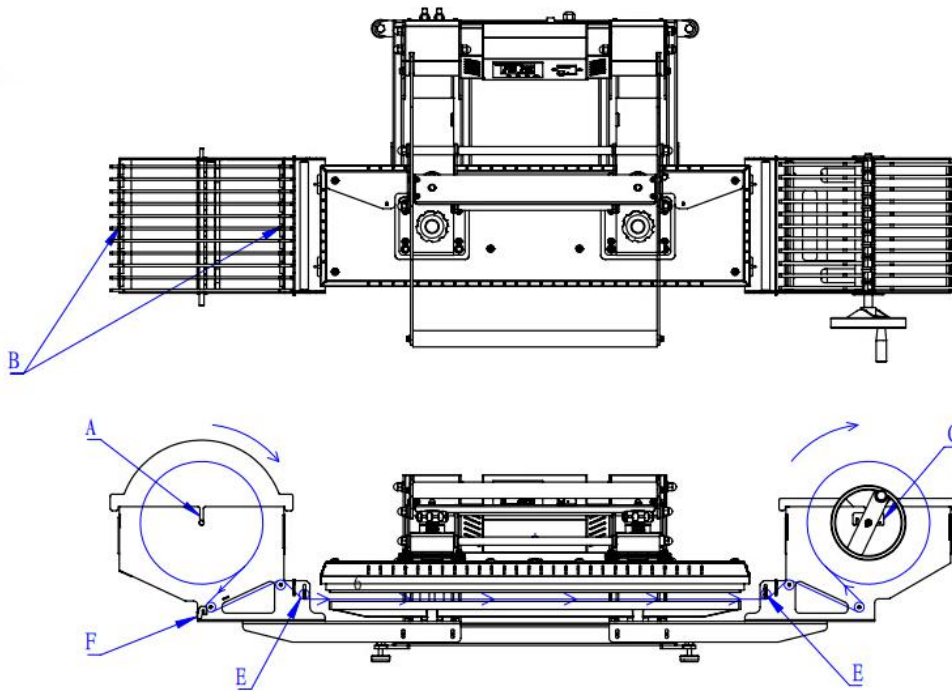
1. Lanyard discharge box (1PCS)
2. Left install base plate (1PCS)
3. Main lanyard machine (1PCS, optional)
4. Lanyard Winding Box (1PCS)
5. Right install base plate (1PCS)
6. Discharge box partition (12PCS)
7. Discharge shaft (1PCS)
8. Receiving box partition (12PCS)
9. Rewinding (1PCS)
10. Front and rear positioning plate (2PCS\*3 models)
11. Discharge box partition positioning plate (2PCS\*3 models)
12. Receiving bin partition positioning plate (2PCS\*3 models)
13. Axis core (28PCS)
14. Intensity adjustment board (1PCS)



## III. Installation

1. Install the left and right mounting base plates on the chassis of the lanyard machine
2. Install the left discharge box and the right rewinding box on the base plate respectively, and adjust the distance from the mainframe;
3. Put the partition positioning plates into the discharging box and the receiving box (the thickness for partition in the discharging box is 6MM, and the one in the winding box is 8MM);
4. Then install the winding box partition (thickness: 8MM) in the card slot of the winding box;
5. Select the front and rear positioning plates of the corresponding width and put them into the card position (this standard device is for three kinds of lanyard with width 12/20/25MM);
6. Then come to the steps for lanyard installation. .

## Graphical representation for lanyard installation



### IV.Steps for lanyard installation

1. First insert the blank lanyard into a string with the discharge shaft, put it into the discharge bin in the direction of the above picture, and the shaft card position is aligned with the U-shaped (A) card slot;
2. Then insert the partitions one by one between each roll of tape and align the positioning card slots (where B);
3. Wrap the lanyard according to the above picture showed, until the end of the receiving box;
4. Put the shaft into the shaft core according to the size of the lanyard, and put it on the upper U-shaped groove (C position);
5. Hook the head of lanyard into the gap of the shaft core, first wrap a few turns, and lock the pressure plate to limit the shaft;
6. Adjust the tension force plate at (F) point to the appropriate strength to prevent the lanyard from being too loose;
7. Adjust the height of the pressure roller (E) at both ends, to make the height of the lanyard to the bottom plate is 2-3MM;
8. When replacing the lanyard, please pay attention to the corresponding positioning parts.

The markings on the positioning parts are:

- 12MM wide (triangular hole, attachment);
- 20MM wide (square hole, default installed);
- 25MM wide (pentagonal hole, attachment).